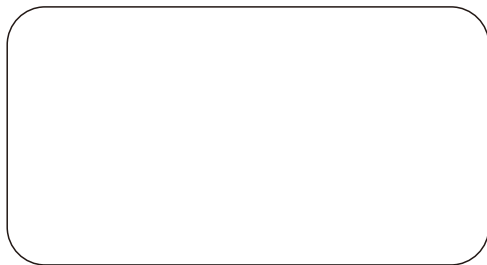


FINGERPRINT LOCK

INSTALLATION INSTRUCTIONS



CONTENTS

Packing List.....	1
Installation Steps	2
Set Password	4
Three Ways to Unlock	7
Other Settings	8
Useful Tips	10
Product Parameters	10
After-Sales Service	11

Packing List

Open the product package. Check that the following accessories are included.

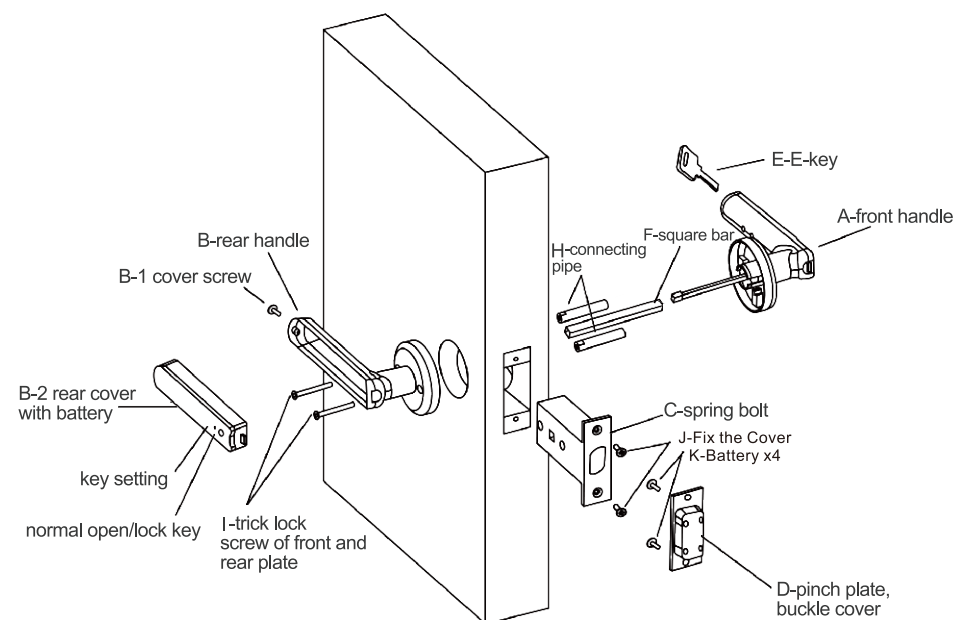
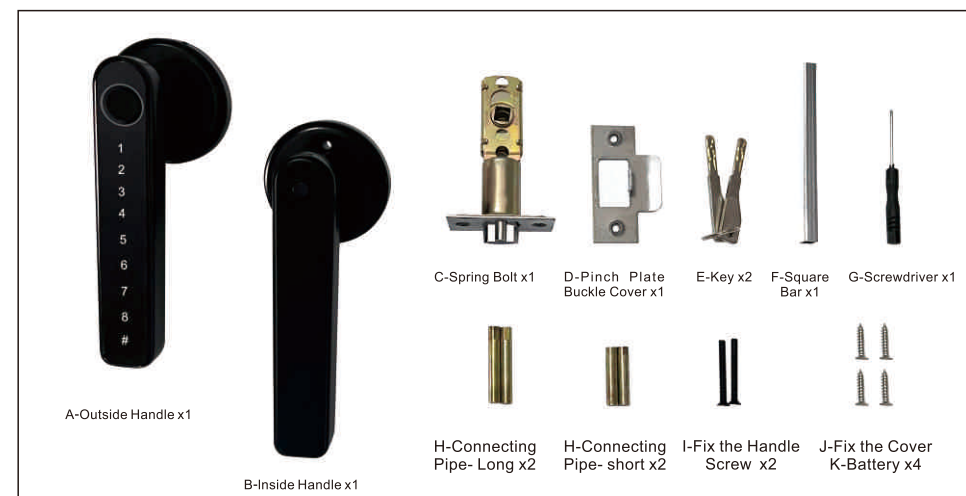
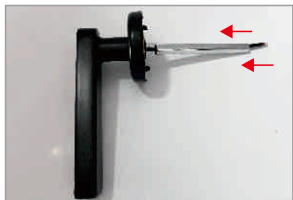


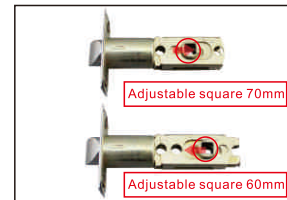
Diagram of Door Lock Installation

Installation Steps

STEP 1:



Pass the square along the wire



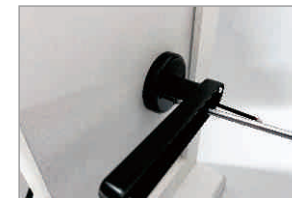
2. The hole position can be adjusted according to the door lock position

STEP 2:



Choose the screw of the corresponding length according to the thickness of the door and tighten the screws

STEP 5:



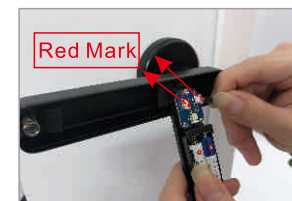
Install and fix the door handle

STEP 3:



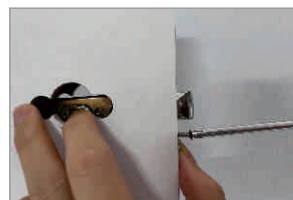
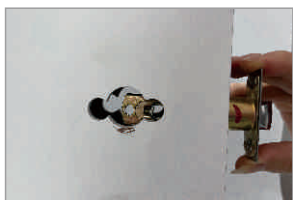
Open the battery cover to install the battery

STEP 6:



Connect door lock circuit board port

STEP 4:

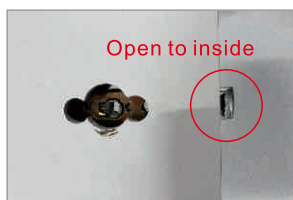


Install the deadbolt

STEP 7:



Tighten the screws securing the battery cover



1. Pay attention to the direction of the lock tongue when you installing



After completing the above steps, the door lock installation is complete

Set Password

CAUTION: Any fingerprint can unlock it if no user is enrolled.

1.Add a Fingerprint User for the First Time



Touch to wake up the password area



Enter "1" + "#" and the indicator will blink blue light

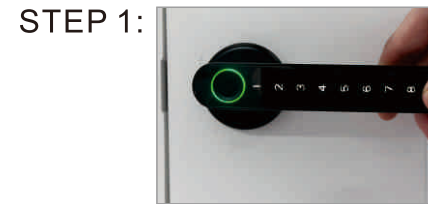


Press the sensor with any fingerprint

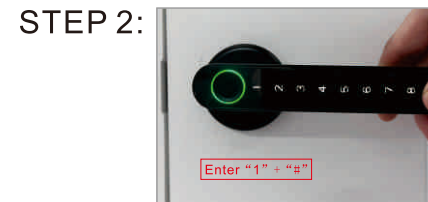


Press the sensor five times with the finger you want to enroll

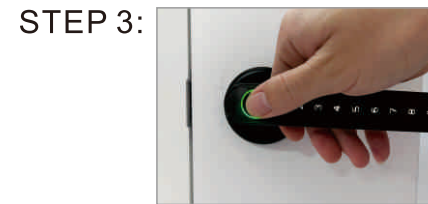
2.Add a Password User for the First Time



Touch to wake up the password area



Enter "1" + "#" and the indicator will blink blue light



Press the registered administrator fingerprint



Input a six-digit password and press "#" to confirm

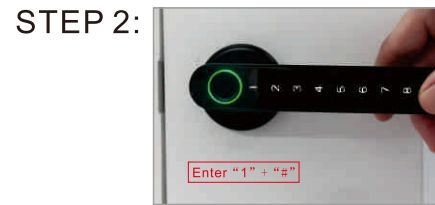


Repeat password input

3. Add Fingerprint User for the Second Time



Touch to wake up the password area



Enter "1 "+"#" and the indicator will blink blue light



Press the registered administrator fingerprint

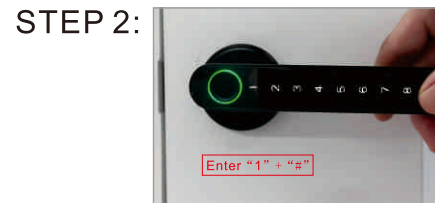


Press the sensor 5 times
rprint with the other finger
you want to enroll

4.Add Password User for the Second Time



Touch to wake up the password area



Enter "1 "+"#" and the indicator will blink blue light



Press the registered administrator fingerprint



Enter the other six-digit
rprint password and press
"#" to confirm, and repeat
the second time

Three Ways to Unlock

1.Fingerprint Unlock



Press the fingerprint sensor on the handle, the indicator light will turn green and emit a beep, unlocking is successful.

2.Pass word Unlock



Touch the wake-up password area, input the 6-digit password and press"#" to confirm, successful.

3.Key Unlock-Emergency Unlock

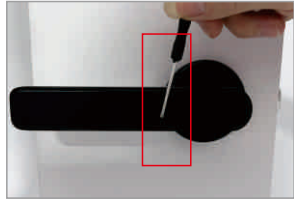


Other Settings

1. Two Ways to Reset and Delete All the Users

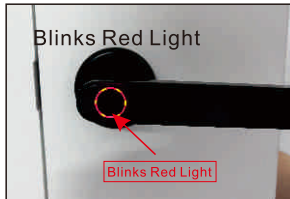
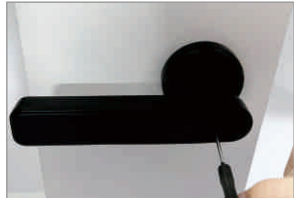
Method 1:

STEP 1:



Long press the small hole on the inside handle with a small screwdriver for 9 seconds

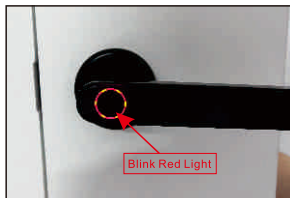
STEP 2:



When the indicator blinks red light, stop the operation, the reset is successful

Method 2:

STEP 1:



Enter "888 "+"#", and the indicator will blink red light

STEP 2:

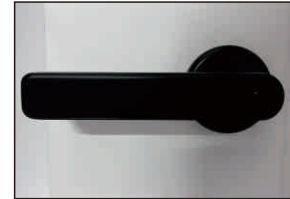


Press the registered administrator fingerprint, the reset is successful

2. Two Ways to Turn ON Normally-Open Mode

Method 1:

STEP 1:



Long press the button on the inside handle for 1 second

STEP 2:



When the indicator light turns green, release the button

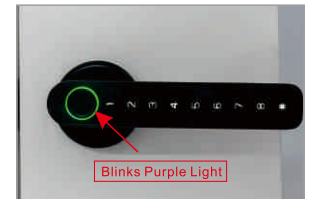
Method 2:

STEP 1:



Touch to wake up the password area

STEP 2:



Enter "28 "+"#", and the indicator will blink purple light

STEP 3:



Press the registered administrator fingerprint

3. Four Ways to Turn OFF Normally-Open Mode

- Repeat the above 2 methods to turn off the normally open mode
- Press "#" to lock and turn off the normally open mode
- Enter an enrolled fingerprint or password to lock up

4. Emergency Unlock

Method 1:

STEP 1:



Plug the USB power cord into the connector

STEP 2:



Press the registered administrator fingerprint

STEP 3:



Unlocking is successful

Useful Tips

1. Keep at least one key out of the door for emergency.
2. When the battery is low, the indicator will blink red light. The rest power could only be used for about 50 times.
3. When the battery is out of power, you can unlock the door with key, or supply the lock with power through the micro-USB port and use fingerprint or password to unlock it.
4. Use alkaline batteries to prevent the damage by battery leakage. Batteries must be replaced every 2 years.

Product Parameters

1. Number of fingerprints: 50
2. Number of passwords: 100
3. Power supply: 4 AAA 1.5V alkaline batteries

After-Sales Service

If you have any problem during installation or operation, please contact us.

Useful Tips:

1. Keep at least one key out of the door for emergency.
2. When the battery is low, the indicator will blink red light. The rest power could only be used for about 50 times.
3. When the battery is out of power, you can unlock the door with key, or supply the lock with power through the micro-USB port and use fingerprint or password
4. Use alkaline batteries to prevent the damage by battery leakage. Batteries must be replaced every 2 years.

Q&A:

Q: The button doesn't respond and light doesn't light up?

A: Check the cable is it connect to the right way or it's loose, After this it's still can't work, normally it's the battery dead. It needs to change the batteries (4*1.5V AAA battery), or pull out the inner back cover and insert it again.

Q: Which model of the door can install the fingerprint door lock ?

A: There is no limit. If the door thickness more than 3.5cm-6.5cm then it can install.

Q: How to restore the factory settings ?

A: Long click the setting button 5s, the blue light will shining and have the bee sound, After 5s will have the red light shining and have a voice remainder "initial success", This means successful.

Q: What is the initial password if the fingerprint lock is restored to the factory setting?

A: Initial password is "123456" #

Q: How to do if the lock run out of the battery?

A: Use the power bank to connect the USB port to charge then use of use the key to open the door.

Q: How to do if you forget the password?

A: Use the fingerprint or key to unlocked the door and then restore the factory settings to reset the password.